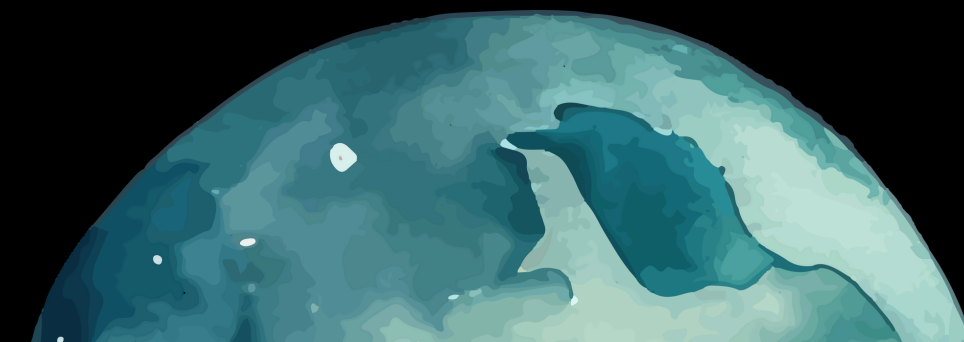
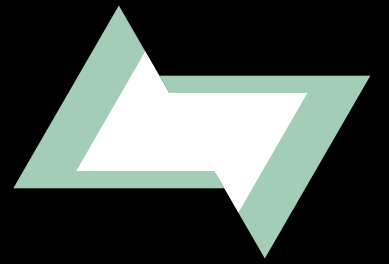




Smart Capital for a Digital First Era

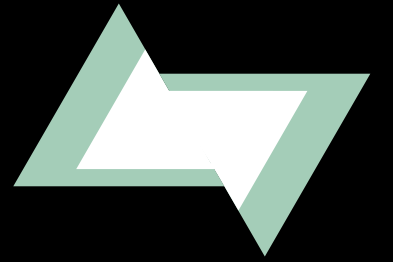
[Online Dossier](#)





About Assetlite Ventures

Assetlite Ventures is a platform built to bridge visionary founders and discerning investors across the world. Our mission is simple: Enable early-stage startups to connect with capital faster, and empower investors to discover emerging opportunities globally. We focus on digital startups that operate with asset-light models—businesses that have high growth potential without the need for large upfront investments in physical infrastructure. This enables them to scale quickly, adapt to market changes, and reduce risk. Our network of investors is carefully curated to ensure the right match with the right companies, offering both capital and strategic value.



Asset-Light Business Models

An Asset-light business model focuses on minimizing fixed assets like property, machinery, or large physical inventories. Instead, these businesses leverage technology, outsourcing, and third-party partnerships to reduce operational costs while scaling quickly. Examples include SaaS companies, platform businesses like Airbnb, or digital-only brands that rely on dropshipping or third-party production.

Advantages include:

Scalability: Grow rapidly with minimal capital expenditure.

Flexibility: Quickly pivot or adapt to new trends.

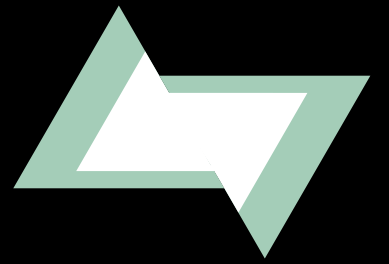
Reduced Risk: Lower overhead costs and greater agility in economic shifts.

Examples of Successful Asset-Light Businesses:

Uber: Platform model leveraging drivers instead of owning cars.

Airbnb: Accommodation network without owning real estate.

Netflix: Digital content platform relying on cloud infrastructure.



Our Edge

At Assetlite Ventures, we don't just connect capital with startups — we create strategic alignments and partnerships designed for maximum scalability, flexibility, and long-term success.

What makes us Different:

Strategic Curated Matches

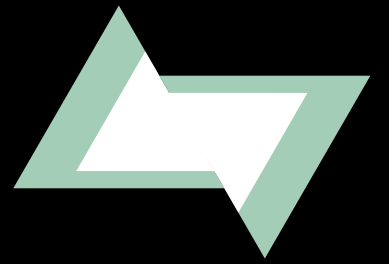
We don't believe in random introductions. Every founder-investor match we facilitate is intentionally curated, ensuring strategic fit, shared vision, and aligned growth objectives.

Founder-First Philosophy

We prioritize founder success above all else. Our approach is designed to empower visionary entrepreneurs — giving them the flexibility, capital, and support they need to lead their companies with confidence.

Efficiency at the Core

In today's fast-moving markets, speed matters. Our digital-first infrastructure streamlines every stage of the capital-raising process — from first conversation to deal close — without compromising on due diligence or quality.



Our Edge

Global Reach, Boutique Attention

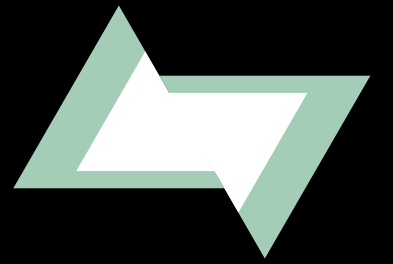
Through our expansive investor network, we offer founders access to global funding sources. Yet every engagement remains boutique, personalized, and meticulously crafted — no mass-market models, no cookie-cutter deals.

Asset-Light Focused Expertise

Our specialization in asset-light business models gives us a unique lens: we understand scalability without heavy capital expenditure. We recognize the next generation of digital-first, low-overhead companies poised to lead global markets.

Relationship-Driven Capital

We are more than capital allocators — we are strategic partners. Assetlite Ventures fosters long-term relationships where investors actively support founders through introductions, partnerships, and advisory beyond just financial investment.



Founder outcomes we empower

At Assetlite Ventures, we believe capital is more than a transaction — it's a catalyst for transformational growth.

The following examples illustrate the type of Founder journeys Assetlite Ventures is built to empower:

- ◆ **Scaling with Speed**

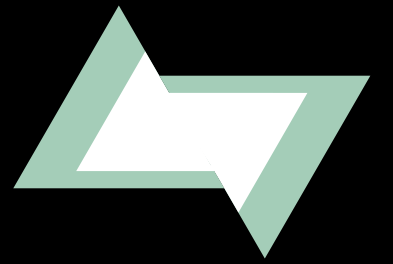
A SaaS startup secures £500,000 in strategic funding, scaling from prototype to 10,000 active users in just 6 months through lean, digital-first operations.

- ◆ **Smart Capital at Work**

A digital fashion brand raises early growth capital, expanding internationally into three key markets and quadrupling online revenue within its first year.

- ◆ **Strategic Growth Partnerships**

A health-tech platform connects with industry-leading investors, resulting in advisory board appointments, strategic partnerships, and accelerated market entry.



Investor outcomes we empower

At Assetlite Ventures, we believe capital is more than a transaction — it's a catalyst for transformational growth.

The following examples illustrate the type of Investor journeys Assetlite Ventures is built to empower:

- ◆ **Early Access to High Potential Startups**

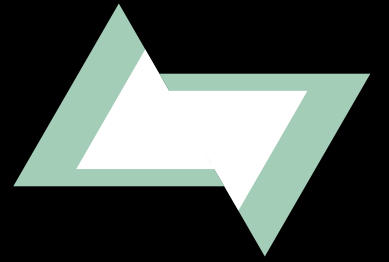
Investors gain early access to curated opportunities — founder-led, asset-light businesses with scalable, digital-first models built for rapid expansion.

- ◆ **Strategic Value Amplification**

Through active collaboration, investors provide not just capital but strategic insights, network leverage, and operational guidance — accelerating founder success and portfolio returns.

- ◆ **Diversified Investment Opportunities**

Our highly-curated deal flow spans multiple sectors and geographies, allowing investors to build diversified, risk-optimized portfolios aligned with future market trends.



Ready to Scale Smart?

Whether you're a visionary founder ready to grow or a sophisticated investor seeking transformative opportunities;

Assetlite Ventures is your partner for strategic success.

Join our curated network — where capital meets innovation, and where partnerships create new market leaders.

Explore partnership opportunities today at assetlitevc.com